



Posters



Backlit and Frontlit Signage

## RasterLink 6 Sophisticated RIP Software maximizes performance

Intuitive and user-friendly operation



1. Easy to follow icons enable intuitive and user-friendly operation



2. Related settings feature in one window to simplify RIP operations with 'Register as Favourite' option available for regularly used layouts



3. Printing progress can be monitored on the main screen

Web update function is supported:  
This facility enables easy program updates and profile downloading to be performed via the internet.



Banners

### Specifications

	JV150-130	JV150-160
Printhead	On-demand piezo head	
Print resolution	360dpi, 540dpi, 720dpi, 1,080dpi, 1,440dpi	
Maximum print width	1,361mm	1,610mm
Maximum media width	1,371mm	1,620mm
Ink	<b>Solvent ink</b> <b>ES3 (C, M, Y, K, Lc, Lm) - SS21 (C, M, Y, K, Lc, Lm, Lk, Or) - BS3 / BS4 (C, M, Y, K)</b>	
	<b>Water-based sublimation ink</b> <b>Sb53 (Bl, M, Y, K, Dk, Lb, Lm) - Sb54 (Bl, M, Y, K)</b>	
Package size	ES3: 440ml Ink cartridge SS21: 440ml Ink cartridge / 2L Ink pack* BS3 / BS4: 600ml Ink pack / 2L Ink pack* Sb53: 440ml Ink cartridge / 2L Ink pack* Sb54: 2L Ink pack*	
	Media thickness: 1.0mm or less Rolled media weight: 40kg or less	
Certifications	VCCI class A / FCC class A / ETL UL 60950 CE Marking (EMC, Low voltage, and Machinery directive) / CB RoHS / REACH and Energy Star / RCM	
Interface	USB 2.0, LAN for E-mail notification function	
Power supply	Single-phase (AC 100-120V / AC 220-240V±10%) 50/60Hz±1Hz	
Power consumption	100V: 1.44kW x 1 or less, 200V: 1.92kW x 1 or less	
Operational environment	Temperature: 20-30 °C (68-86 °F), Humidity: 35-65% Rh (Non condensing)	
Dimensions (W x D x H)	2,525mm x 700mm x 1,392mm	2,775mm x 700mm x 1,392mm
Weight	160kg	185kg

\* Optional MBIS (Mimaki Bulk Ink System) is required for using 2L Ink pack.

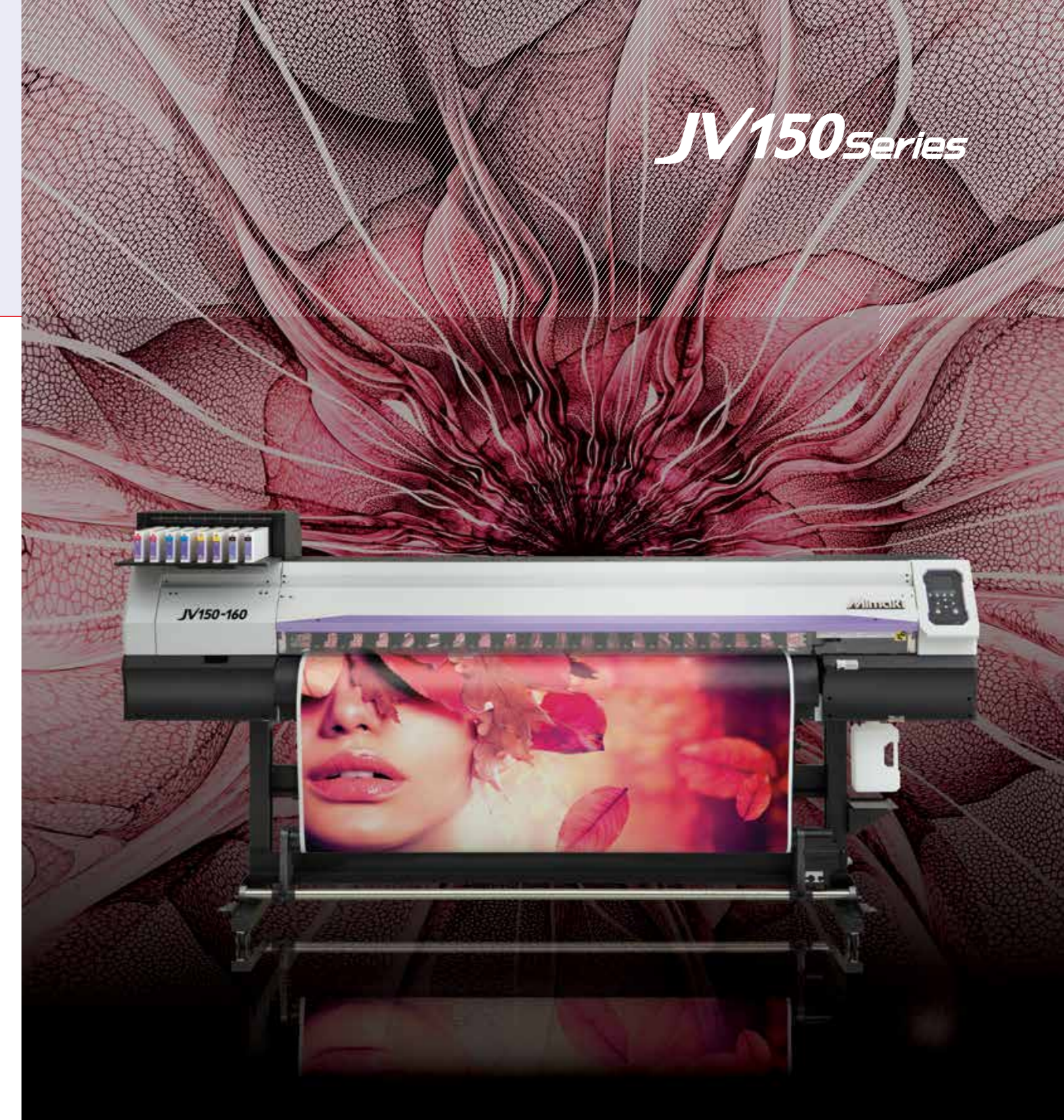
### Supplies

Item	Colour			
Sb53	Blue	SB53-BL-44	440ml Ink cartridge	
	Magenta	SB53-M-44		
	Yellow	SB53-Y-44		
	Black	SB53-K-44		
	Deep Black	SB53-DK-44		
	Light Blue	SB53-LBL-44		
	Light Magenta	SB53-LM-44		
	Blue	SB53-BL-2L		2,000ml Ink pack
	Magenta	SB53-M-2L		
	Yellow	SB53-Y-2L		
Black	SB53-K-2L			
Deep Black	SB53-DK-2L			
Light Blue	SB53-LBL-2L			
Light Magenta	SB53-LM-2L			
Blue	SB54-BLT-2L	2,000ml Ink pack		
Magenta	SB54-MT-2L			
Yellow	SB54-YT-2L			
Black	SB54-KT-2L			

\* Some of the samples in this folder are artificial renderings • Specifications, design and dimensions stated in this folder may be subject to change without notice (for technical improvements, etc.)  
 • The corporate and merchandise names written on this folder are the trademark of the respective corporations • Inkjet printers print using extreme fine dots, so colours may vary after replacement of the printing heads, also note that if using multiple printer units, colours could vary slightly from one unit to other unit due to slight individual differences • Composer's errors reserved

### Supplies

Item	Colour			
ES3	Cyan	SPC-0440C	440ml Ink cartridge	
	Magenta	SPC-0440M		
	Yellow	SPC-0440Y		
	Black	SPC-0440K		
	Light Cyan	SPC-0440LC		
SS21	Light Magenta	SPC-0440LM	440ml Ink cartridge	
	Light Magenta	SPC-0440LM		
	Cyan	SPC-0501C		
	Magenta	SPC-0501M		
	Yellow	SPC-0501Y		
	Black	SPC-0501K		
	Light Cyan	SPC-0501LC		
	Light Magenta	SPC-0501LM		
	Orange	SPC-0501Or		
	Light Black	SPC-0501Lk		
BS3	Cyan	SPC-0588C	2,000ml Ink pack	
	Magenta	SPC-0588M		
	Yellow	SPC-0588Y		
	Black	SPC-0588K		
	Light Cyan	SPC-0588LC		
	Light Magenta	SPC-0588LM		
	Orange	SPC-0588Or		
	Light Black	SPC-0588Lk		
	Cyan	SPC-0667C		600ml Ink pack
	Magenta	SPC-0667M		
Yellow	SPC-0667Y			
Black	SPC-0667K			
Cyan	SPC-0693C			
Magenta	SPC-0693M			
Yellow	SPC-0693Y			
Black	SPC-0693K			
BS4	Cyan	BS4-C-60	2,000ml Ink pack	
	Magenta	BS4-M-60		
	Yellow	BS4-Y-60		
	Black	BS4-K-60		
	Cyan	BS4-C-2L		
	Magenta	BS4-M-2L		
	Yellow	BS4-Y-2L		
	Black	BS4-K-2L		



JV150 Series

Affordable, high performance printer...



Outdoor signage

Mimaki

www.mimakieurope.com info@mimakieurope.com @MimakiEurope

Mimaki Europe B.V. Stammerdijk 7E, 1112 AA Diemen, The Netherlands Tel: +31 (0)20 4627640

MEUV15004-E



SIGN & GRAPHICS



TEXTILE & APPAREL

Mimaki

The world imagines... Mimaki delivers



the power to **create...**



## Affordable, high-spec, high-performance printer

JV150 Series printer from Mimaki provides high performance, creativity and versatility with vibrant ink types, including new Orange and Light Black, in a cost effective package for signmakers, display graphics professionals and printshops.

### ENGINEERING EXCELLENCE AND CREATIVE INNOVATION

Founded in Japan in 1975, Mimaki Engineering has steadily grown by reputation and influence into a global company with large operational bases in Asia and the Pacific, United States and Europe.

Renowned for award-winning performance, peerless build quality and innovative technology, Mimaki has established itself as a leading manufacturer of wide-format inkjet printers and cutting machines for the sign and graphics, textile and apparel and industrial markets. In addition, Mimaki also provides a comprehensive range of supporting products; hardware, software and associated consumable items, such as inks and cutting blades.

From outdoor signage and billboards to interior decoration and furnishing, from packaging and labels to promotional gifts and apparel, Mimaki is committed to developing technology that sets new industry standards, producing machines and products that turn the imagination of our customers into breath-taking reality.

... Mimaki delivers

### JV150 series delivers ...

- Fast printing speeds up to 56.2m<sup>2</sup> per hour
- High quality print resolution of up to 1,440dpi
- Two different printing widths: 1,361mm and 1,610mm
- Choice of multiple eco-solvent and dye sub ink sets:
  - 8-colour options (SS21) featuring; Orange and Light Black
  - Vibrant 6-colour dye sub options (Sb53)
- Nozzle Check Unit (NCU) and Nozzle Recovery System (NRS) ensure continuous print operations
- UISS and optional MBIS on board 2 litre bulk ink system
- 3-way intelligent heater

**SOLVENT & DYE SUB INKS**

**2 PRINT WIDTHS AVAILABLE**

**1,440DPI MAX RESOLUTION**

**MAPS3 PRINT ENHANCEMENT FUNCTION**

**56.2m<sup>2</sup>/h MAX. SPEED**

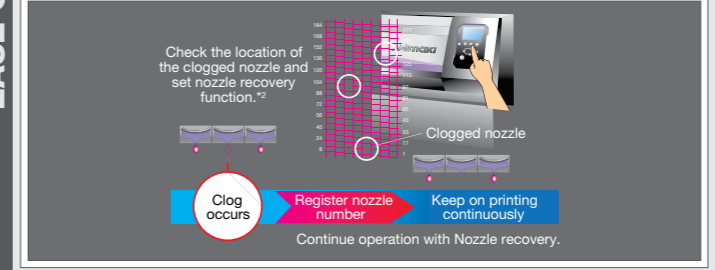


**Create ...** Stickers, Decals, Labels, Signage, Vehicle graphics, Banners, Posters, PoS, Backlit & Exhibition graphics, Garment marking, Canvas prints and much more...

### EASE OF USE

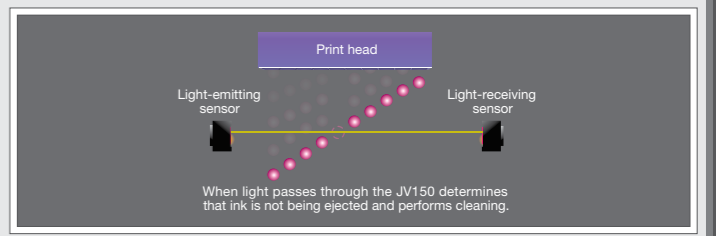
**Productivity maintenance - NRS<sup>\*1</sup>**  
The NRS substitutes defective nozzles with non-defective nozzles until the technician arrives. This feature enables uninterrupted print operations and continuous productivity.

<sup>\*1</sup> NRS: Nozzle Recovery System <sup>\*2</sup> 10 nozzles per nozzle row can be registered.



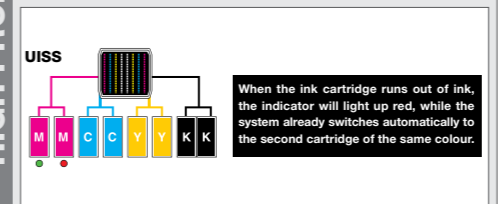
**Prevention, print quality problems - NCU<sup>\*</sup>**  
The JV150 is equipped with Mimaki's original automatic NCU. Clogged nozzles are automatically detected and cleaned by the NCU. If the clogging is not resolved by cleaning, the JV150 automatically sets the nozzle recovery function NRS and resumes printing. These functions significantly reduce the waste printing caused by clogged nozzles during a continuous printing run.

<sup>\*</sup> NCU: Nozzle Check Unit



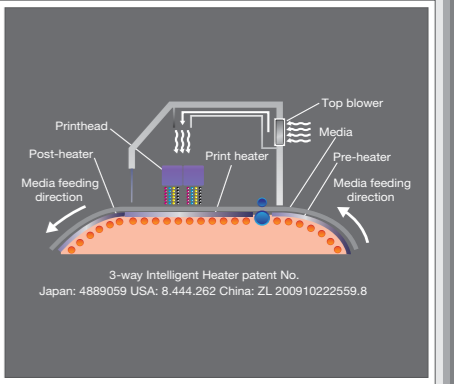
### HIGH PRODUCTIVITY

**Uninterrupted Ink Supply System (UISS)**  
Utilises two cartridges per colour in 4-colour mode. When one cartridge runs out of ink the system switches automatically to the second cartridge of the same colour, enabling long unattended printing.



**3-Way intelligent heater**  
A 3-way intelligent heater fixes droplets placed on media. By using Mimaki's original technology in heating the media at a controlled temperature, ink can be fixed while maintaining high colour development and high image quality. Thus the JV150 provides both steady colour development and easy handling after printing.

- Pre-heater: Heats media to the optimum temperature before printing.
- Print heater: Dries ink after it lands on media before it bleeds, improving colour development.
- Post-heater: Enhances ink drying and achieves stable take-up.
- Top blower: Air blower supports drying of ink.

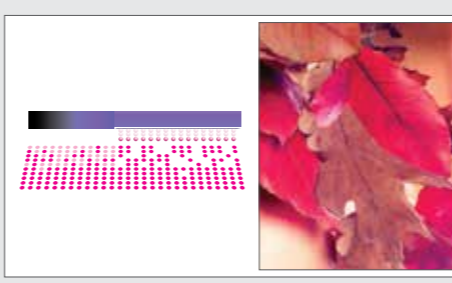


### KEY TECHNICAL FEATURES ...

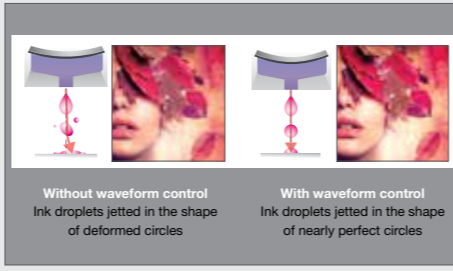


### BEAUTIFUL OUTPUT

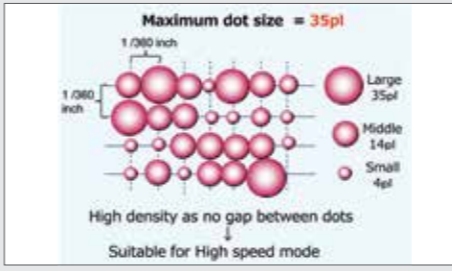
**MAPS (Mimaki Advanced Pass System)**  
Reduces banding by dispersing ink drops between passes.



**Waveform Control Technology**  
Ensures high quality print resolution, by jetting ink drops in straight lines with almost perfect round dots, delivering clear and sharp letters, lines and edges.

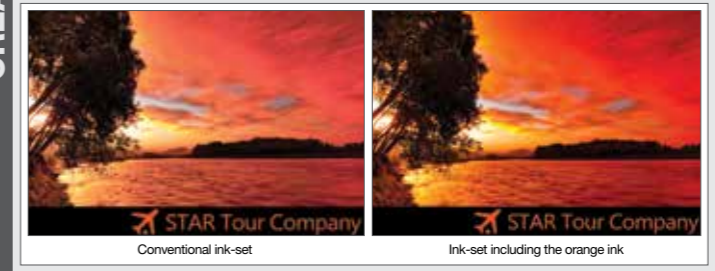


**Large ink dot size in high speed mode**  
Delivers high density print by removing the gap between dots.



### CREATIVITY

**Orange Ink (faithful colour reproduction)**  
By using the orange ink as a process colour, 94.8% of the PANTONE colour chart is covered with approximate colours. Thanks to a wider gamut with the orange ink, food freshness can be simulated, and corporate colours can be faithfully represented.



**Light Black Ink (greater definition)**  
The light black ink improves the printed grayscale gradation. It also faithfully represents monochrome data without introducing unexpected colour shifts. Light black ink ensures a more accurate colour representation.

